



CUSTOM TEAM KIT

2021/22

staark



Staark was born one cold autumn morning when our founders realised that just maybe all the apparel currently available in the market doesn't quite actually cater for every body. They watched their cycling companions pulling on garments that were either too loose or tight in places; for the outlay they had all made on their beautiful bicycles, they were owed clothing that had an equal amount of much attention paid to it.

The founders aren't ex-pro cyclists, they are grassroots cyclists who have loved the sport since their childhood years, growing up through BMX, mountain biking, cycle-commuting and road cycling. Between them they have many years of experience on the saddle; and an absolute desire to make garments that not only fit perfectly, but out-perform the competition.



Steve



Alasdair

We create all of our apparel at our family-run factory in northern Italy, the heartland of Italian cycling heritage.

We only use sustainable materials in the construction and packaging, ethics is at the very core of the business. In February this year we attained B Corp pending status for our business practices and commitment to putting ethics before profit.

Certified



Corporation
PENDING



We'll work with you to make your team or club the kit that you deserve. If you have your designs already that's great, if you need some help then our in-house design studio can assist you in bringing your vision to life.

Once you've approved the designs, just let us know quantities and we'll get the kit underway. We'll give your club members their very own personalised website to visit and place their orders. We keep it as simple and stress-free as possible for you.



Not everyone is the same, and not everyone wants the same style of kit. If some members want a more relaxed fit we can do that, if some want a more aero fit, we can do that too. Every garment is labelled with the style of fit, so choose what suits your style of riding.

This is your kit, not ours. We've moved our branding to make way for yours.





Summer Race Jersey

Combines fabrics that feature excellent wicking, breathability, lightness and elasticity. The race jersey fits closer to the body, offering a more aerodynamic approach. The sleeves are raw cut with a longer length.

4-way stretch for all day comfort and performance

Light and fast-wicking micromesh to improve moisture management

Premium Italian fabrics

Full-length concealed YKK zipper



Women & Men

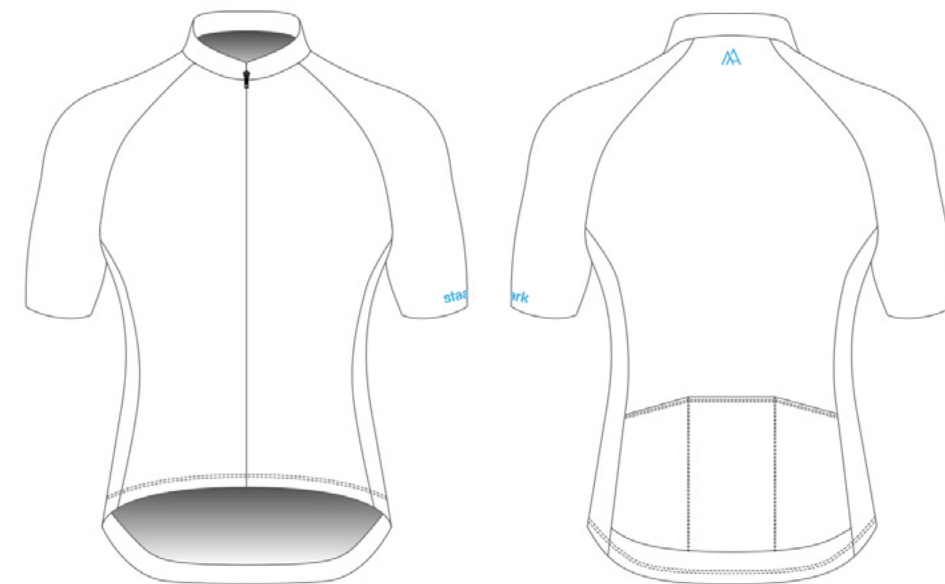


Slim

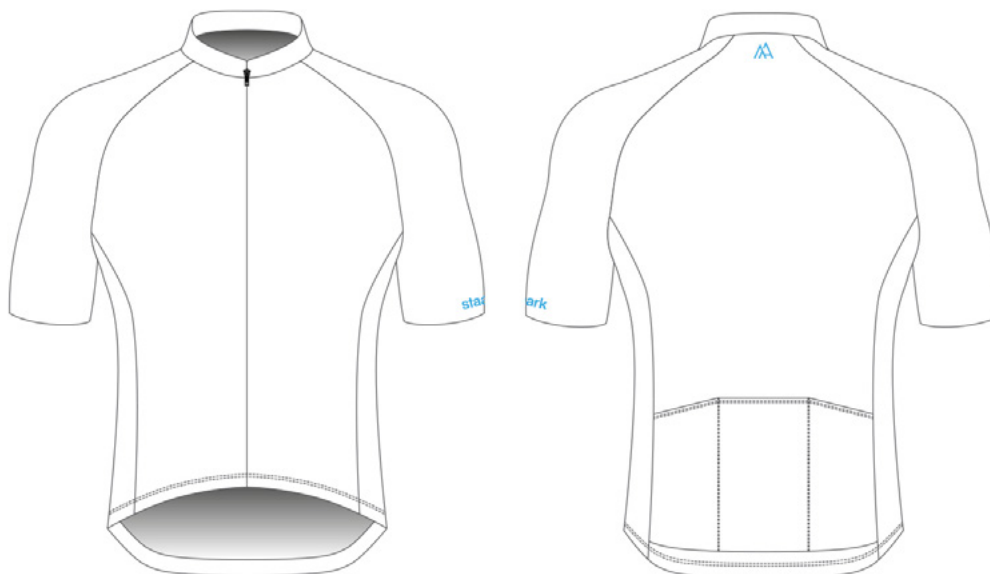


Polyamide, Polyester, Elastane

- Breathable
- Lightweight
- Thermal



Women



Men

* white area is available for customisation.

Summer Ride Jersey

The ride jersey is a more relaxed fit for the cyclist who doesn't need a close cut race performance jersey. It still retains the premium fabrics and performance, just with more comfort.

4-way stretch for all day comfort and performance

Light and fast-wicking micromesh to improve moisture management

Premium Italian fabrics

Full-length concealed YKK zipper



Women & Men

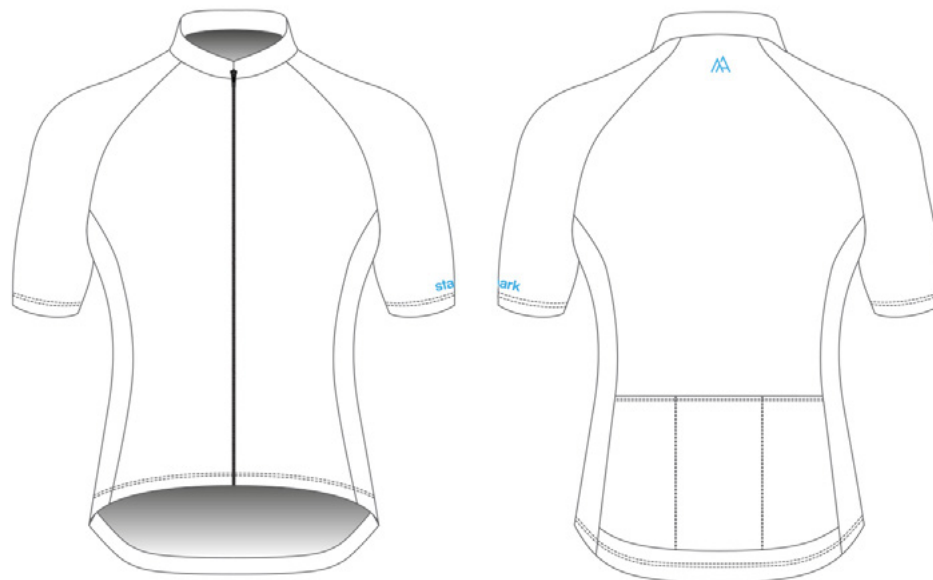


Relaxed

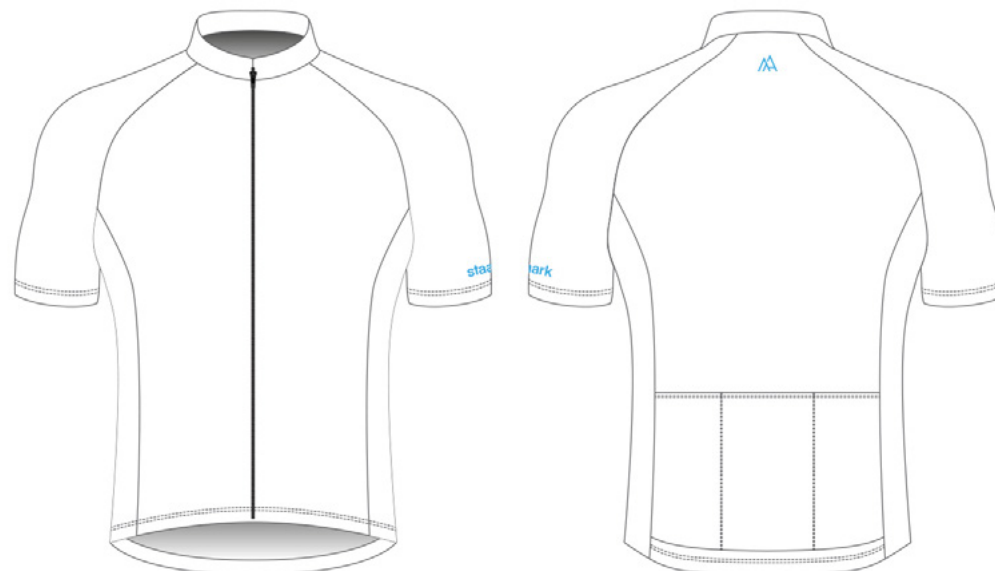


Polyester, Elastane

- Breathable
- Lightweight
- Thermal



Women



Men

* white area is available for customisation.

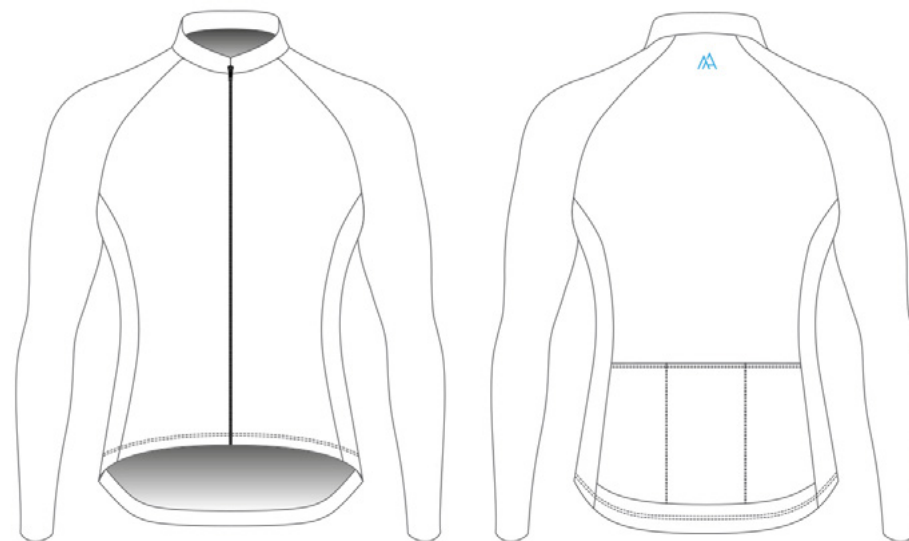
Race Jersey Longsleeve

All the features of the short sleeve variant and adding long sleeves with a thermal Italian engineered fabric created for warmth, comfort and breathability.

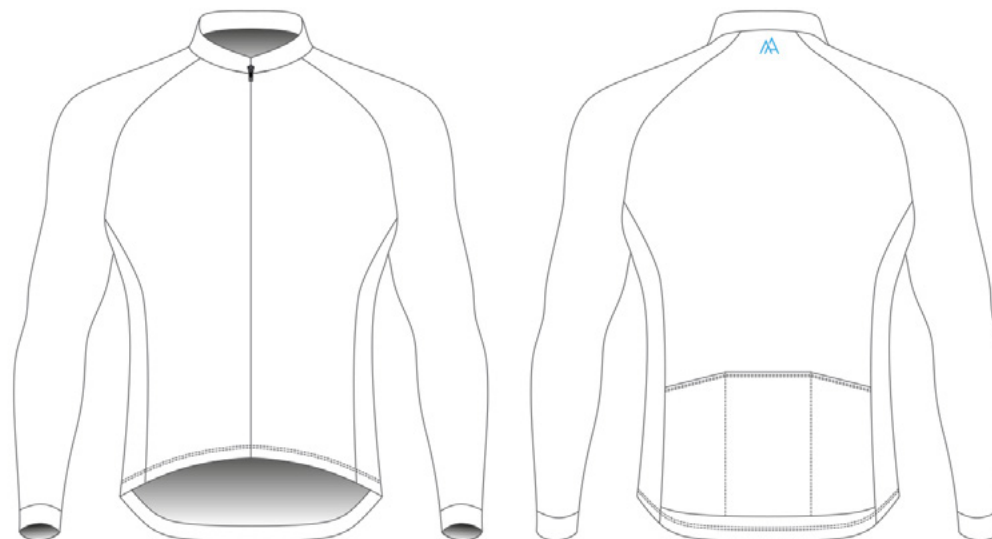
Premium Italian fabrics

Full-length concealed YKK zipper

Reflective tabs for safety in low light



Women



Men



Women & Men



Slim



Polyester, Elastane

- Breathable
- Lightweight
- Thermal

* white area is available for customisation.

Ride Jersey Longsleeve

All the features of the short sleeve variant and adding long sleeves with a thermal Italian engineered fabric created for stretch, warmth, wicking and breathability.

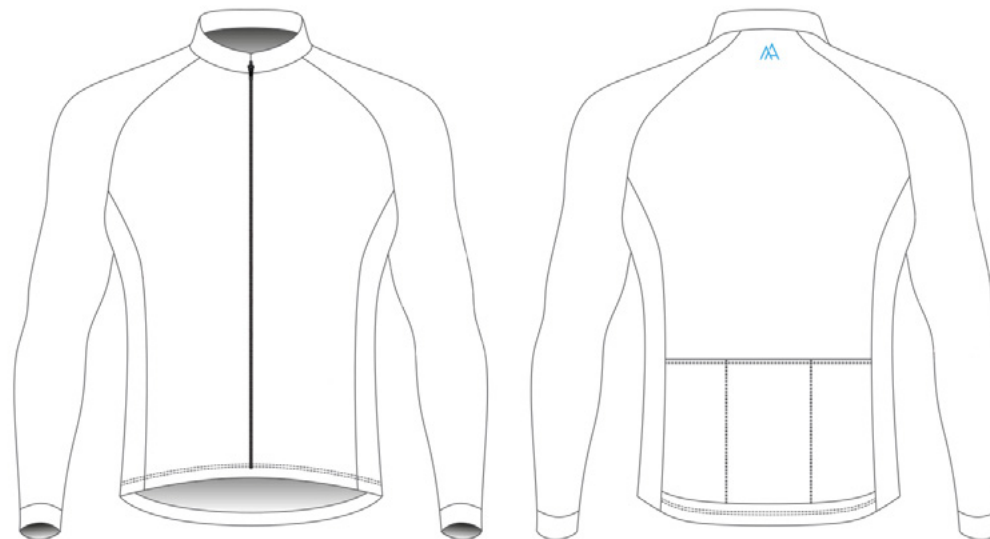
Premium Italian fabrics

Full-length concealed YKK zipper

Reflective tabs for safety in low light



Women



Men



Women & Men



Relaxed



Polyester, Elastane

- Breathable
- Lightweight
- Thermal

* white area is available for customisation.

staark®



Bib Shorts

Developed to be comfortable for an all-day ride, using flatlocked seams, with the perfect compression and support. Comfortable and functional silicon grippers on the legs. Constructed with a fabric produced with a special elastomer that ensure amazing abrasion and pilling resistance.

High compression construction

Anatomical cut

Premium Italian fabrics

Cytech pad

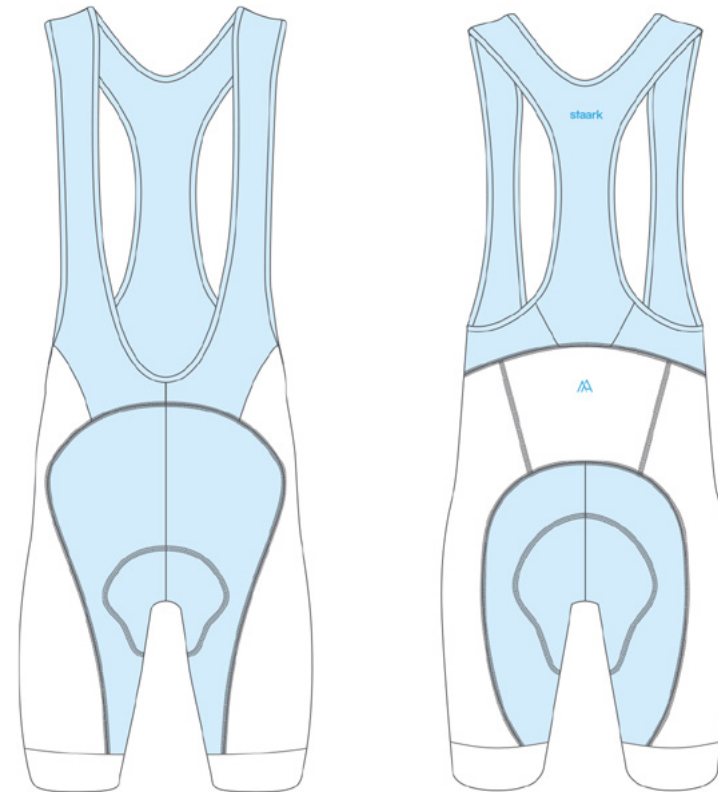


Women & Men



Polyamide, Elastane

- Breathable
- Lightweight
- Thermal



* white area is available for customisation.

Bibtights

Developed to be comfortable for an all-day ride, using flatlocked seams, with the perfect compression and support. The thermal fabric guards against cold temperatures and higher back offers further warmth and protection.

High compression thermal construction

Anatomical cut

Premium Italian fabrics

Cytech pad

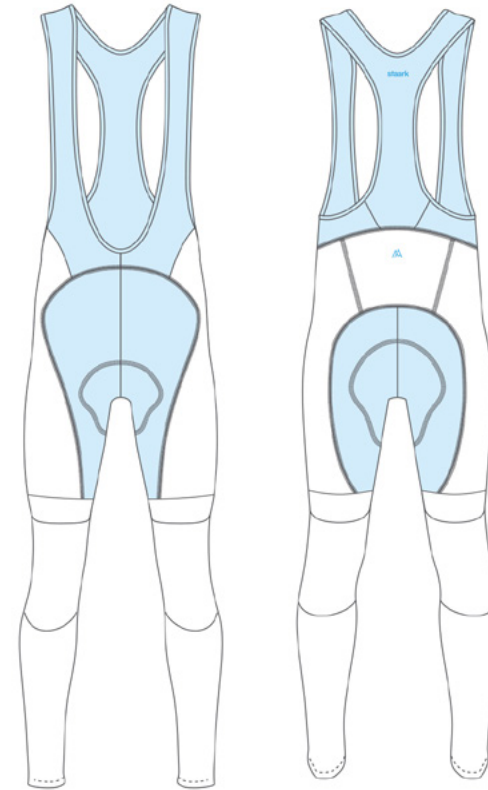


Women & Men



Polyamide, Elastane

- Breathable
- Lightweight
- Thermal



* white area is available for customisation.

Shorts

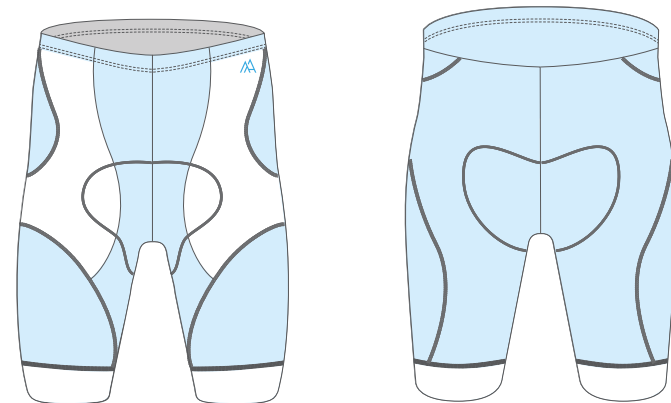
Created for the cyclist that prefers the feel of a conventional short and doesn't want bib shorts. These use flatlocked seams with perfect compression and support. Comfortable and functional silicon grippers on the legs. Constructed with a fabric produced with a special elastomer that ensure amazing abrasion and pilling resistance.

High compression construction

Anatomical cut

Premium Italian fabrics

Cytech pad



Women only



Polyamide, Elastane

Breathable
 Lightweight
 Thermal



staark

proto.team (v1.0)

staark

Gilet

A lightweight gilet, easily packable into you rear pocket for use whenever you need it on those mid-season rides.

Elasticated tape at armholes to keep wind out

High collar for protection against the elements

Premium Italian fabrics

Full-length concealed YKK zipper

Reflective tabs for safety in low light



Women & Men

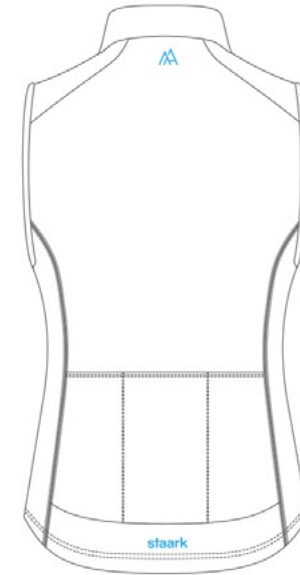


Slim

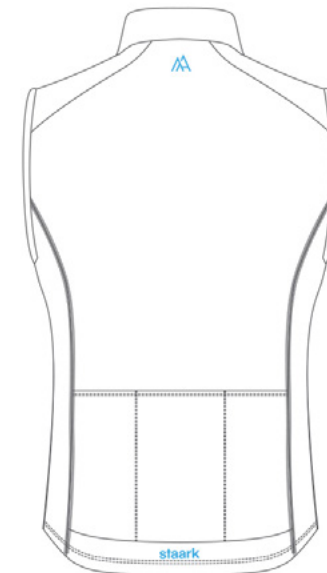
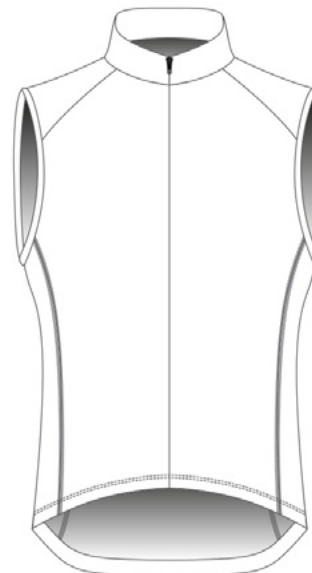


Polyester, Elastane

- Breathable
- Lightweight
- Thermal



Women



Men

* white area is available for customisation.

Stowaway Jacket

Windproof, showerproof, thin enough to be stowed away for any weather emergency.


Due to the nature of the construction, customisation is limited to a single colour team/club logo on the breast area. Jacket is white, team/club jersey will show through.

Premium Italian fabrics

Full-length concealed YKK zipper



SIZING - Women should order one size up from their usual size in this style for the correct fit.

 Women & Men

 Slim

 Polyester

 Breathable
 Lightweight
 Thermal

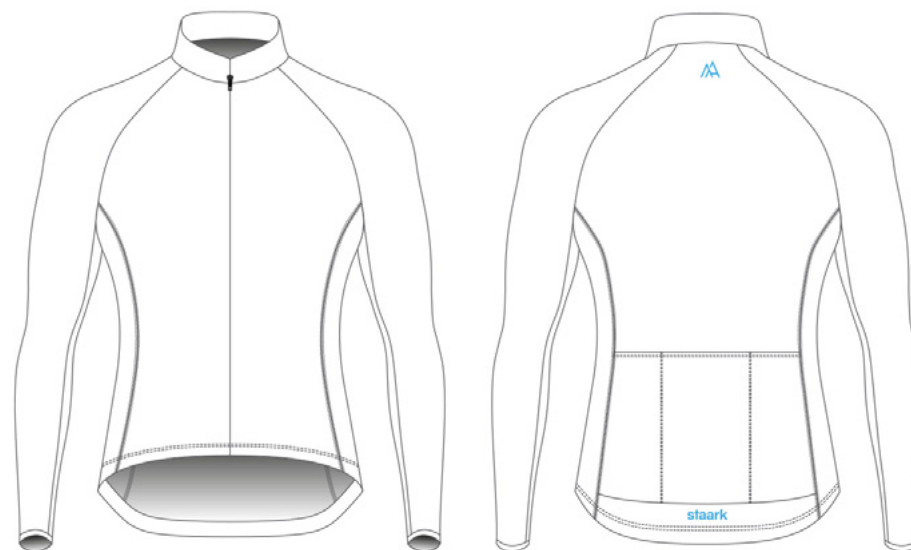
* white area is available for **single colour** customisation.

Winter Jacket

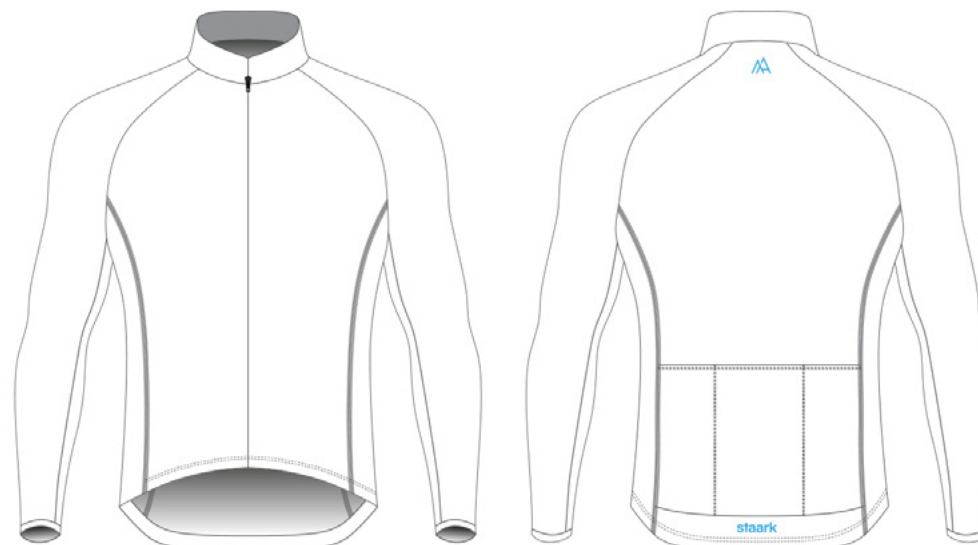
The winter jacket provides effective defence from the elements at the coldest times of the year, most effective between -6° and $+10^{\circ}$. It has elasticated cuffs, silicon gripper and flatlocked seams to ensure it keeps the cold out.

Premium Italian fabrics

Full-length concealed YKK zipper



Women



Men



Women & Men



Slim



Polyester, Elastane

- Breathable
- Lightweight
- Thermal

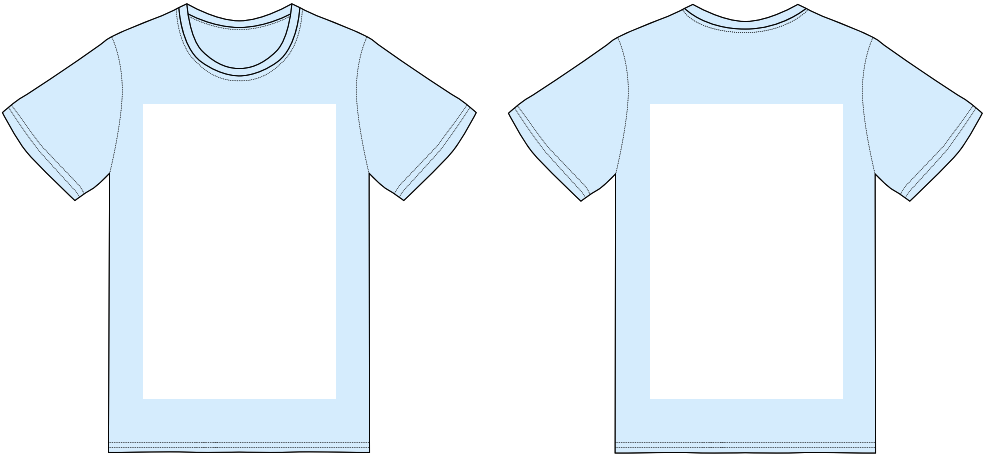
* white area is available for customisation.



Tshirt

A club staple piece, the classic cotton tshirt, perfect for club logos and showing your allegiance to your favourite cycling club while not on the bike!

100% organic cotton



Women & Men



Slim



Cotton

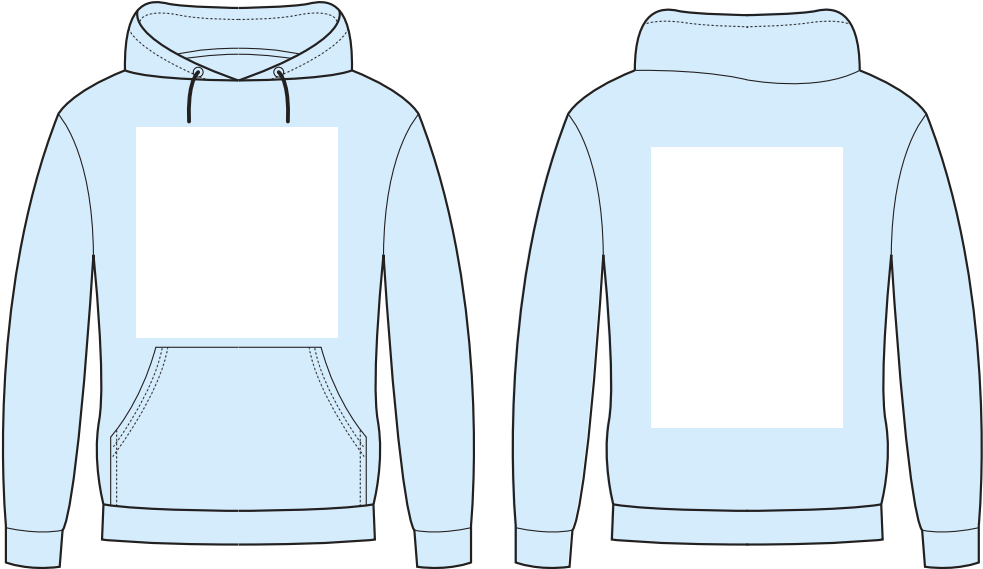
- Breathable
- Lightweight
- Thermal

* white area is available for customisation.

Hooded Sweatshirt

Great for pre-race warmth or for just sat in a bar. Get your club name out there with a printed hoodie.

100% organic cotton



Women & Men



Slim



Cotton

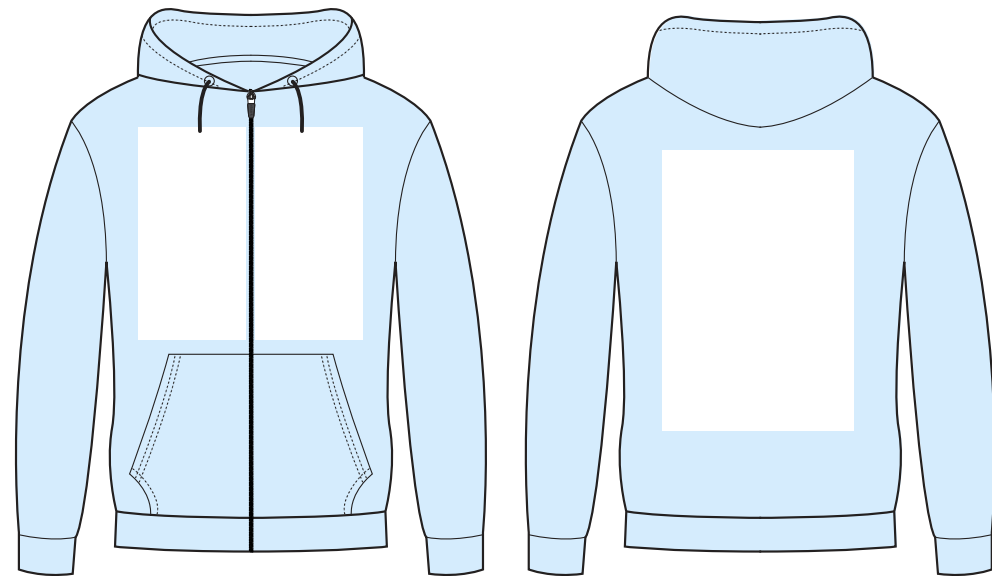
- Breathable
- Lightweight
- Thermal

* white area is available for customisation.

Zip Hooded Sweatshirt

Great for pre-race warmth or for just sitting in a bar. Get your club name out there with a printed hoodie, this one comes zipped so it doesn't ruin your hair... unlike your bike helmet!

100% organic cotton



Women & Men



Slim



Cotton

- Breathable
- Lightweight
- Thermal

* white area is available for customisation.

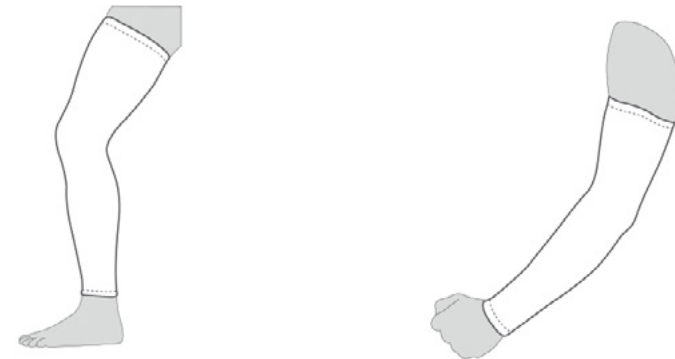
Warmers

Ideal thermal protection with an internal microfleece keeping these light and fast-wicking.

Active compression

Silicon grippers

Premium Italian fabrics



Women & Men



Slim



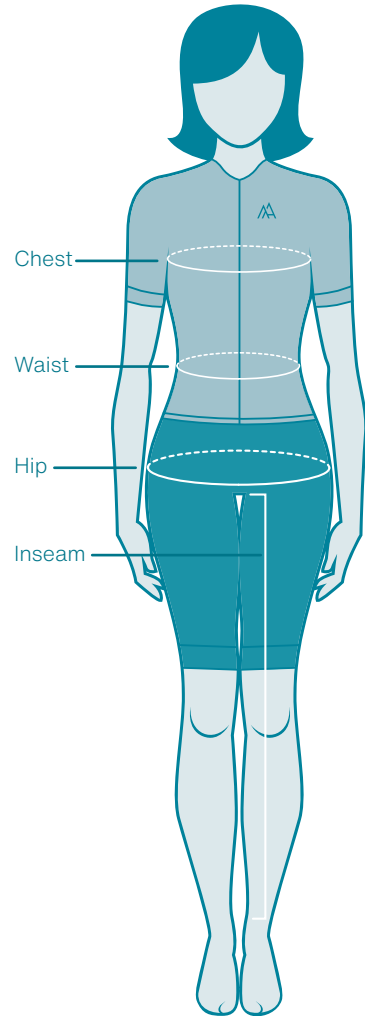
Polyester, Elastane

- Breathable
- Lightweight
- Thermal

* white area is available for customisation.



Women's Sizing



The sizing below is body measurements, and not garment measurements. Please measure yourself closely (but not tight) with a tape measure and be honest!

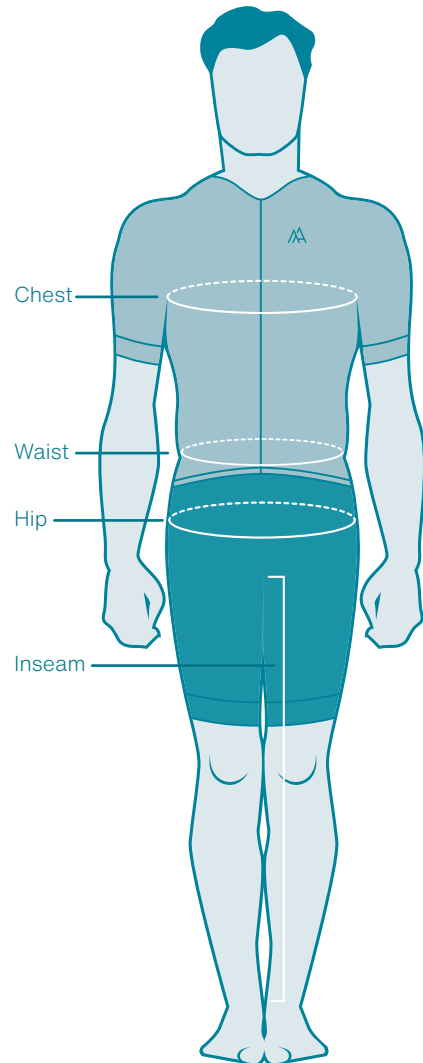
Our clothing is made from high quality Italian fabrics and designed to be figure hugging, they all have plenty of stretch. The most efficient way of calculating your size is by the chest measurement for tops and waist measurement for bottoms.

		XXS	XS	S	M	L	XL
CHEST	INCH	31.5	33	34.5	36	38	40
	CM	80	84	88	92	96	100
WAIST	INCH	23.5	25	27	28.5	30	31.5
	CM	60	64	68	72	76	80
HIP	INCH	33	34.5	36	38	39.5	41
	CM	84	88	92	96	100	104
INSEAM	INCH	29	29.5	30	30.5	31	31
	CM	74	75	76	77	78	79

Minimum order quantities are 10 per garment style. If your requirement is less than 10, you can order men's apparel and size one up to ensure you all have kit.

We strive for equality in sports, and women in cycling are growing which we love. One day it will be an even split between the sexes! We can't wait for that day.

Men's Sizing



The sizing below is body measurements, and not garment measurements. Please measure yourself closely (but not tight) with a tape measure and be honest!

Our clothing is made from high quality Italian fabrics and designed to be figure hugging, they all have plenty of stretch. The most efficient way of calculating your size is by the chest measurement for tops and waist measurement for bottoms.

		XS	S	M	L	XL	XXL
CHEST	INCH	34	36	38	39.5	41.5	43.5
	CM	86	92	96	100	105	110
WAIST	INCH	30	31.5	33	34.5	36	38
	CM	76	80	84	88	92	97
HIP	INCH	35.5	37	38.5	40	41.5	43.5
	CM	90	94	98	102	106	111
INSEAM	INCH	32	32.5	33	33	33.5	34
	CM	81	82	83	84	84	86

Artwork

You can either send your completed artworks or you can work with our in-house design studio to create the art for you.

You've got no logo, no idea how you want it to look? No problem, we have years of design expertise, we can make it work for you.



Contact

Email kiera@staark.cc

Staark

2 Stephen Street
London W1T 1AN
United Kingdom

Opening Hours

Monday - Friday
09:30 - 17:30 GMT

Social

facebook.com/staarkcycling
instagram.com/staarkcycling
twitter.com/staarkcycling
www.staark.cc

